

Setup SurvCE to Send NMEA Messages out Data Collector COM Port

Date: 6 July 2017

By: Mark Silver, ms@igage.com, +1-801-412-0011 x16

Step-by-step instructions for using NMEA output from data collector.

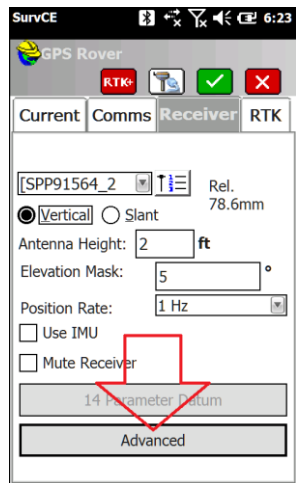
1

Notes:

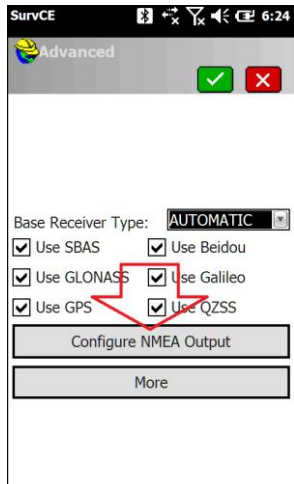
1. NMEA messages are ONLY output when SurvCE is in Store, Stake or Monitor Skyplot. In other words: only when SurvCE is actively communicating with the GPS head.
2. You need to know the COM port number of the physical port on your data collector. Some examples: Juniper Systems Allegro 2, Archer 2 (Carlson Surveyor 2 and Mini-2): COM1. Ranger 3 COM 1.
3. You will need a 2-3 reversal cable if you are going to connect to a PC directly. So that would be a gender changing (female to female, null modem) cable.

Setup Steps for SP80:

1. From Equip: GPS Rover: connect to GPS head, then on the receiver tab click on the advanced button:



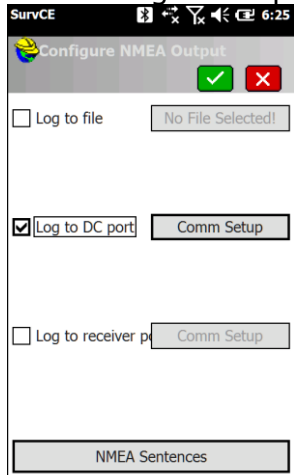
2. From the Advanced screen:



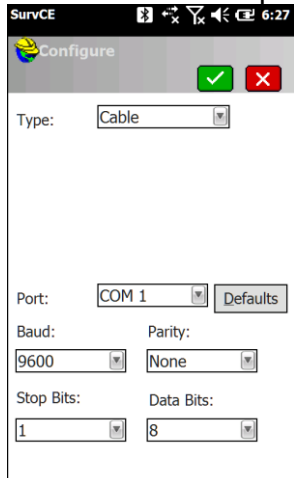
2

Click on the 'Configure NMEA Output' button.

3. Check the 'Log to DC port' button:

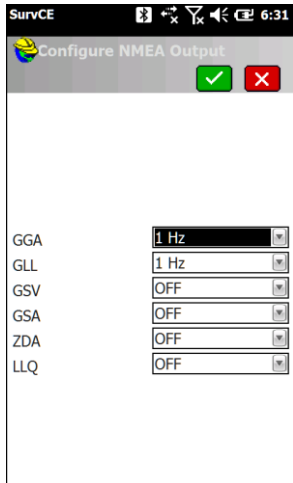


4. Click on 'Comm Setup' and configure as needed:



Click on the green check mark when complete.

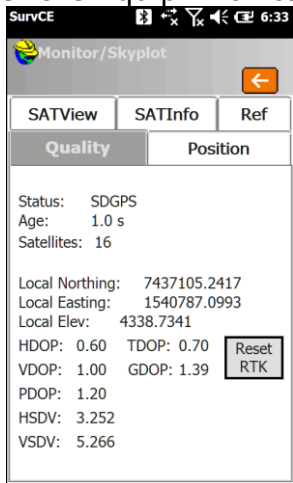
5. Click on the NMEA Sentences and set one or more sentences to the required rate:



3

6. Now complete the setup process.

7. Enter the Equip: Monitor Skyplot screen:



If everything has gone well, you should be able to open a terminal emulator (like putty) and see strings:

```
COM1 - PuTTY
SGPGLL,4044.170394,N,11151.569908,W,225943.00,A*1F
SGPGGA,225945.00,4044.170395,N,11151.569915,W,2,16,00.6,01305.576,M,-054.888,M,,0000*59
SGPGLL,4044.170395,N,11151.569915,W,225945.00,A*14
SGPGGA,225946.00,4044.170395,N,11151.569921,W,2,16,00.6,01305.568,M,-054.888,M,,0000*52
SGPGLL,4044.170395,N,11151.569921,W,225946.00,A*10
SGPGGA,225947.00,4044.170397,N,11151.569923,W,2,16,00.7,01305.563,M,-054.888,M,,0000*59
SGPGLL,4044.170397,N,11151.569923,W,225947.00,A*11
SGPGGA,225948.00,4044.170398,N,11151.569928,W,2,16,00.6,01305.567,M,-054.888,M,,0000*57
SGPGLL,4044.170398,N,11151.569928,W,225948.00,A*1A
```